



DEALER APPLICATION GUIDE

LIGHT IS LEMAX
LX50II
SEARCHLIGHT

THE MOST POWERFUL
SEARCHLIGHTS, FLASHLIGHTS AND
WEAPON LIGHTS

LIGHT IS LEMAX
LX70
SEARCHLIGHT

Section A: products & accessories

LX70 SEARCHLIGHT

LX50II SEARCHLIGHT

Light output	7500 lumens	5300 lumens
Lighting distance*	2250 m	1450 m
Weight	2,3 kg	2,1 kg
Waterproof	up to 50 m (tested to 100 m)	up to 50 m (tested to 100 m)
Runtime low mode	140+ min	200+ min
Runtime high mode	100+ min	140+ min
	*ANSI / NEMA FL-1 2009 standard for flashlight testing	*ANSI / NEMA FL-1 2009 standard for flashlight testing

Key advantages :

- **No overheating problem when switched on for longer time**
- Extreme light output
- Very long lighting distance
- Focused centre weighted light beam
- Support for external power source (car, truck, etc.)
- Supports standard filters - IR, yellow, soft lens (LX50II only)
- Supports other filters - UV, red, green, blue (only for LX50II - on special request)

Packaging of LX50II & LX70

The standard package of both searchlights is consisting of :

1. One searchlight body with handle
2. One high-power LXB2 rechargeable battery
3. One wall charger (EU, USA or Australian plug), 100-240V, 50/60Hz fitted with searchlight adaptor
4. One high-quality carry case / shipping box with foam (*)

(*) the case for LX50II can accommodate 1 x searchlight, 2 x batteries, 1 x wall charger, up to 5 filters and adaptor for external power source

(*) the case for LX70 can accommodate 1 x searchlight, 2 x batteries, 1 x wall charger and adaptor for external power source, adaptor for remote control with LXB2 battery

Adaptor for external power source (optional)



Many of the user applications for LEMAR searchlight in the field rely on battery powered operation. An increasing number of LEMAR customers requested an external power adaptor to enable the LX50II and LX70 searchlights to be operated independently from the standard LXB2 battery connected to the searchlight.

The LEMAR standard adaptor for external power source (as shown below) requires 9 V to 16 V power supply and can be connected to a cigarette lighter socket in cars or other power sources available on armoured vehicles, 4WD vehicles, boats, trucks, helicopters etc.

Advanced adaptors for up to 48 V supply are available on special request.

Adaptor for remote control LXB2 battery (optional)



This adaptor allows the LXB2 battery installed away from the searchlight. The remote on/off switch is integrated in the sealed battery cap. The standard cable length supplied between battery cap and searchlight is 5 meters (10 meter cable is available optional on request)

This adaptor comes into use when the searchlight is installed on a roof, on a mast, on a tripod etc. The complete solution is dust, humidity and rain proof and can be used in harsh environments.

Filters (optional), for model LX50II only

LEMAX has developed a number of filters and lenses for the LX50II searchlight to provide solutions for special applications.

Infra red filter

suitable for use together with new generation of night vision equipment. Standard IR filter cut off 850 nm (semi covert filter). IR filter with 780 nm or 930 nm (full covert) are available on special request.

Yellow filter

suitable for use in foggy conditions. Different wave length enables better visibility in fog (less reflection of water particles).

Soft lens

suitable for applications where illumination of a large area is required rather than a long distance, focused light beam. Typical applications include rescue operations (vehicles accidents, aircraft and train accidents, capsized boats etc.), replacement of standard light source in emergency situations, temporary light at all types of construction sites. The applications are manifold. In many instances, the LX50II searchlight with soft lens fitted would be mounted on a tripod (standard camera tripod possible - be aware of weight restrictions).

LEMAX does offer other color filters and filters for special applications on request (red, green, blue, UV).



Other accessories (optional)

Shoulder strap

suitable for LX50II & LX70 when carrying searchlight for longer period of time or when both hands are required for other duties.

Tripod

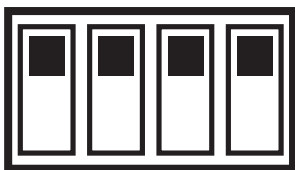
LX50II and LX70 searchlights both incorporate a standard thread fixture for a tripod. Any photographic tripod can be used to support the searchlight (be aware of weight restrictions).

Section B: Advanced functions of LX50II & LX70

LEMAR searchlights are market leading products due to their design, electronic engineering and capabilities. Build around a powerful CPU which monitors the light's parameters, manages the power source and power distribution, the LX50II and LX70 are state of the art equipment ready to be deployed in the most demanding applications.

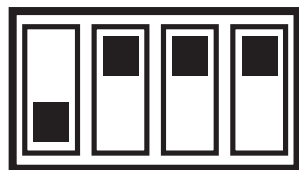
Dip switches on the inside of the searchlight housing enable the user to change settings and to turn the LX50II and LX70 into a powerful source of light for many applications.

Overview of available settings



1 2 3 4

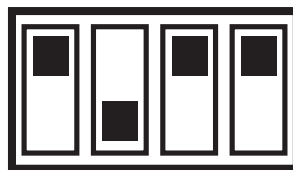
Standard (default) position



1 2 3 4

Low mode lock.

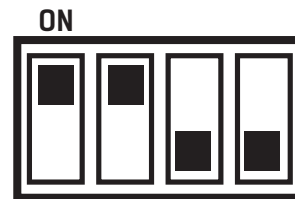
The LX50II will be locked at 35W and the LX70 at 50W output power. This settings ensures that both lights perform for the longest runtime without the requirement to select low mode when switching on. Useful for various scenarios where runtime is more important than the beam distance.



1 2 3 4

High mode lock.

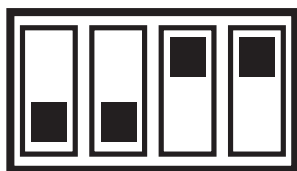
The LX50II will be locked at 50W and the LX70 at 70W output power. This settings ensures that both lights perform with maximum power without the requirement to select high mode when switching on. Useful for various scenarios where beam distance is more important than the runtime.



1 2 3 4

External power source position (B)

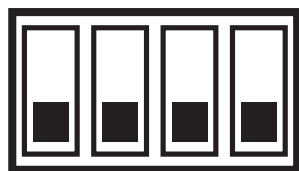
Select when using searchlight with adaptor to remote control LXB2 battery or other power source. Standard LXB2 battery monitoring system of searchlight is switched off to allow the use of other power sources in line with specification of the searchlight.



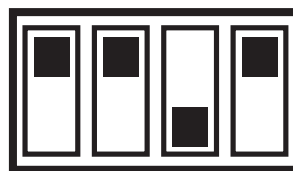
1 2 3 4

Custom positions

Available for custom functions e.g. SOS signal, strobe light effect (contact Lemax for details) - Please note, no function enabled when ordering searchlights in standard configuration.



1 2 3 4



1 2 3 4

External power source position (A)

Select when using searchlight with adaptor for external power source. Standard monitoring system of the searchlight is switched off to allow the use of other power sources in line with specification of the searchlight.

Note :

a. rotary switch of searchlight is disabled in this setting

b. the searchlight is permanently ON when power is connected and user to select other solution to switch searchlight ON / OFF (e.g. ignition swicth of **vehicle**)

Section B: Applications for use of LX50II & LX70

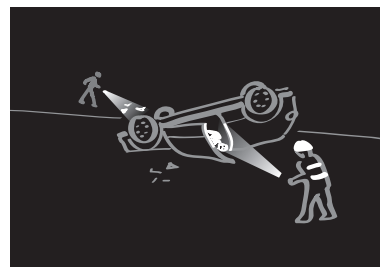
A . Search & Rescue (examples)



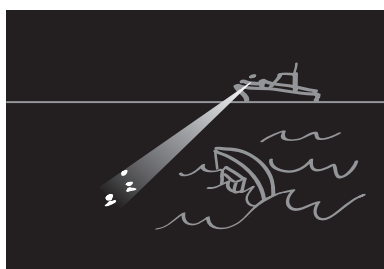
Helicopter search and rescue



Car accidents



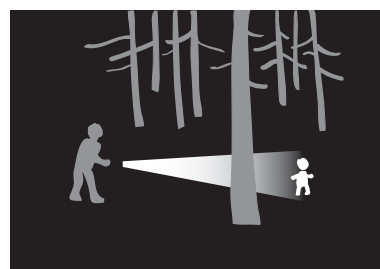
Car accidents



Capsized yachts



Rail accidents



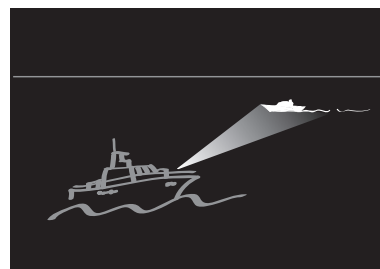
Lost - forrest, desert & mountains



Emergency signalling



Natural disasters



Coast Guards

Objectives: illuminate large areas, accident scenes, search for people (ocean, lakes, forrest, mountains, caves , deserts etc.)

Consider: Manual or fixed use from boats, helicopters, vehicles, cranes or tripod mounted using

- spare batteries
- external power source adaptors
- soft lens
- color filters
- shoulder strap
- tripod

B . Security , Patrolling & Checking (examples)



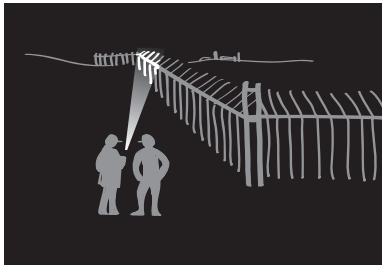
Prison Guards



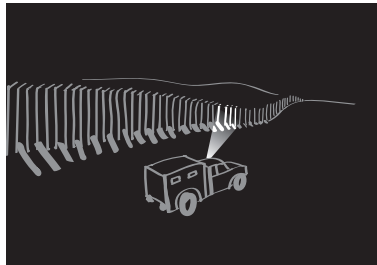
Road bloc & check points



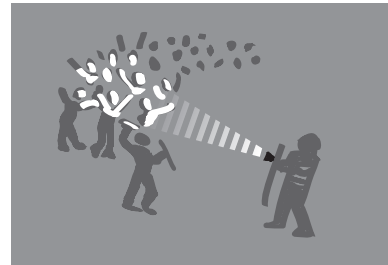
SF actions



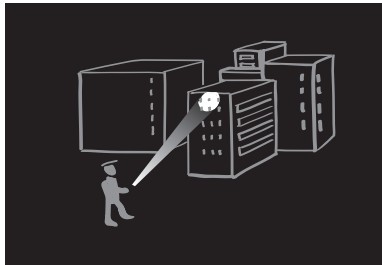
Border Guards & Patrol



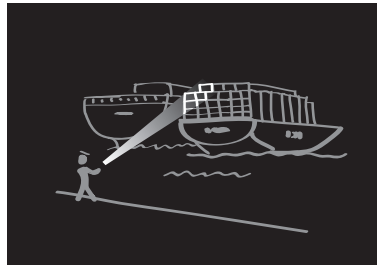
Border Guards & Patrol



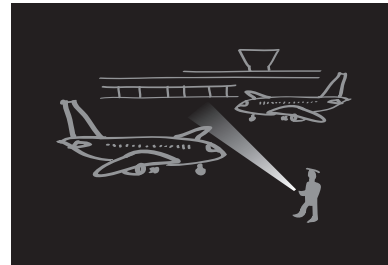
Crowd Control



Large buildings & areas



Port & docks security



Airport perimeter security



Customs check points



Forensic use (special filter)

Objectives: illuminate more specific targets rather than very large areas

- Consider:**
- Manual, sometimes vehicle fixed mounted solution
 - spare batteries
 - external power source adaptors
 - IR filter
 - UV filter (forensic use)
 - shoulder strap

C . Critical infrastructure protection patrol



Power plants



Power lines & masts

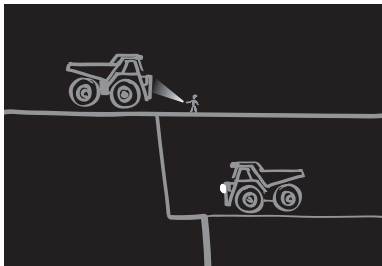


Oil pump routine check

Objectives: illuminate specific target areas

Consider: Manual or fixed use from vehicles
- spare batteries
- external power source adaptors
- soft lens
- yellow filter
- should strap
- tripod

D. Mining

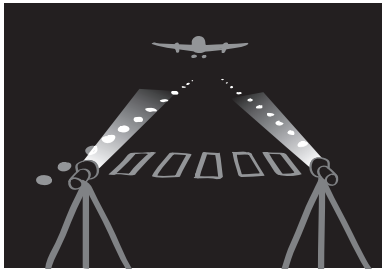


Mining - routine checking, security

Objectives: illuminate specific target areas

Consider: Use from vehicles with adaptors, basic repairs
- external power source adaptors
- soft lens
- adaptor for remote control LXB2 battery
- tripod

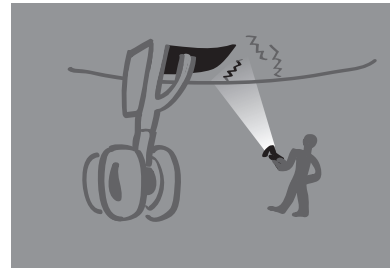
E. Aircraft & Airport



Airport runway backup illumination



Routine aircraft checking



Aircraft inspections (UV light)

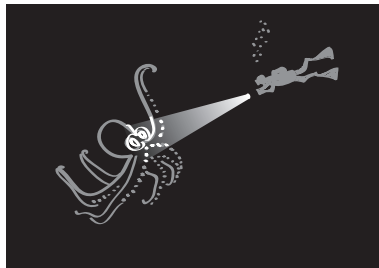
Objectives: illuminate specific areas, detailed checking

Consider: Manual or tripod
- spare batteries
- color filters
- should strap
- adaptor for remote control LXB2 battery
- tripod

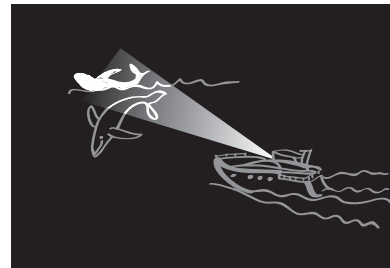
G. Other applications (examples)



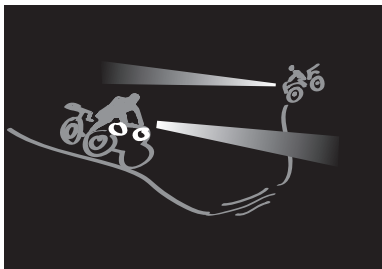
Cave explorers



Diving (up to 50m)



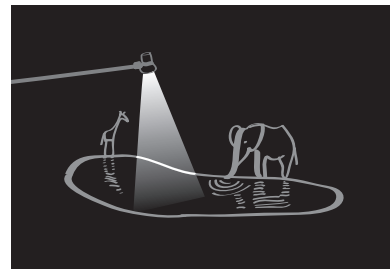
Night fishing, hunting



Offroad 4 x 4, Quad bikes



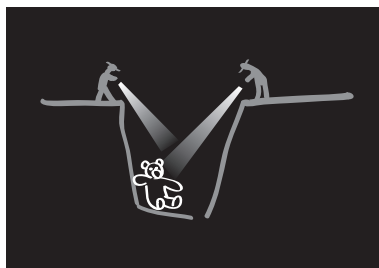
Long distance signalling (over 10km)



Water hole animal watching



Halls / tents, private / defense



Animal search

Objectives: illuminate large areas, long distances, versatile useful tool for every day use

Consider: Manual or fixed use from boats, vehicles or tripod mounted using

- spare batteries
- external power source adaptors
- adaptor for remote control LXB2 battery
- tripod
- soft lens
- color filters
- should strap
- IR filter

LEMAX® - Performance & Reliability when it matters!

LEMAX® designs, manufactures and markets professional, portable searchlights and flashlight for the sophisticated users around the world. Ruggedized, lightweight, powerful and best battery run time in its class have made our HID searchlights the product of choice for many applications. Not only Defence, Security, Search & Rescue but also the commercial market have chosen LEMAX® as their partner for military grade performance searchlights. We pride ourselves providing premium quality product Made in Europe at competitive pricing.

Searchlights are widely used by police units, military, during rescue missions (e.g. during floods, earthquakes, landslides, etc.), by various security personnel (airport security, ports, military bases, mining establishments, warehouses, tall buildings, and important stations), national park rangers, enthusiasts, etc.



LEMAX[®]

www.lemax.cz

LEMAX s.r.o.

Pulkruhova 158/1 / Prague 6 / 16000 / CZECH REPUBLIC

Phone / +420 777 245754 / email.: info@lemax.cz